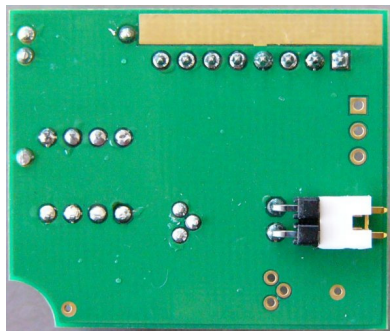


# ClinchFX EP-PRE

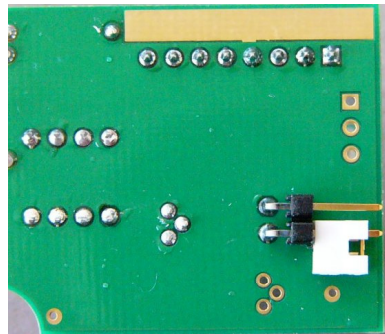
## Supplementary Instructions for revised PCB

We had the opportunity to compare the tone of both early and later EP-3 units. We found a significant difference in tone as a result of differing frequency and phase response between the original (S/N 9068 to 9450) and later revisions.

As we were revising the EP-PRE PCB for use in future products, we decided to include a jumper to allow changing between the two different tones, as shown in the photos below.



Early



Late

When you remove the back cover from the EP-PRE, you will see the rear of the PCB with the jumper fitted to both terminal pins. This will give the tone of the early EP-3.

To get the tone of the later EP-3, remove the DC power plug and/or battery. Gently slide the jumper to the right so that it slides off both pins. Then slide the jumper back on to one pin only in order to prevent losing the jumper, in case you wish to change back to the original EP-3 tone.

Re-connect power or battery, connect your guitar and amp and try the tone.

You will find that the later setting has some treble cut and gives a more mellow tone than the early setting.

When you have found your favourite setting, replace the back cover on the pedal and enjoy.